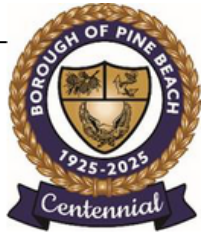




# Pine Beach Newsletter



September 2025



## BOROUGH CALENDAR AT A GLANCE

### SEPTEMBER:

Sept. 1 - **Borough Offices Closed & no trash pickup**  
Sept. 2 - R1 Garbage Pick Up  
Sept. 3 - R2 Garbage Pick Up  
Sept. 5 - Pick up Yard Sale Permits at Fire House 4-6pm  
Sept. 6/7 - PBVFC Community Yard Sale 9am-3pm  
Sept. 13 - Recycling Yard Open 8am-2pm  
Sept. 15 - R1 Bulk Pickup (put out on eve of 9/14)  
Sept. 16 - R2 Bulk Pickup (put out on eve of 9/14)  
Sept. 16 - Land Use Board Meeting 7:30pm  
Sept. 28 - Please put out tied bundles of brush for pickup this week

### OCTOBER:

Oct. 1 - 4<sup>th</sup> Quarter Sewer Due  
Oct. 4 - PBVFC Fire Fest 12pm-7pm at Vista Park  
Oct. 4 - Recycling Yard Open 8am-2pm  
Oct. 13 - **Borough Offices Closed & no trash pickup**  
Oct. 14 - R1 Garbage Pick Up  
Oct. 15 - R2 Garbage Pick Up  
Oct. 18 - Trunk or Treat 1-4pm at Vista Park  
(Rain Date 10/19)  
Oct. 25 - Recycling Yard Open 8am-2pm  
Oct. 30 - Trick or Treat 4-9pm

### Table of Contents

[PAGE 1: Calendar](#)

[PAGE 2: Mayor's Letter](#)

[PAGES 3-7: Summer Recap](#)

[PAGES 8-9: Public Works](#)

[PAGES 10-14: Environmental Commission /Storm Water Pollution](#)

[PAGE 15: Water Dept.](#)

[PAGES 16-18: PBVFC](#)

[PAGES 19-20: Police Dept.](#)

[PAGES 21-23: Preservation Society](#)

[PAGES 24-28: Upcoming Events & Save the Dates](#)

[PAGE 29: Reminders](#)

[PAGES 30-33: 2024 Annual Drinking Water Report](#)

# Letter from the Mayor

What a wonderful time to be in Pine Beach! This summer has truly been an amazing time to be living in Pine Beach. This summer started off with many of our younger citizens graduating from our local schools. This is always an exciting time to relive the growth and development of our kids.

Following this we had the party of the century as Pine Beach celebrated its 100th year of existence. The Pine Beach Preservation Society chose the perfect day for all to enjoy music, food, games and storytelling. A lot of planning and hard work was put into making this celebration go smoothly and it showed as many generations of Pine Beachers gathered.

Then for all of our fitness minded people, the Pine Beach 5K took place. Not only did the runners and walkers run through our Borough but many homeowners were out giving moral support. The PB5K also was in the centennial celebration mood with a special award for the 100th finisher.

This led us into our annual Fourth of July parade and games. What a spectacular day and what a turnout we had! The camaraderie and competition was in evidence as all had a smile on their face, along with some ice cream.

All of this occurred and we were still in the first week of July. Our workers are continuing to provide great services with the office staff answering questions and public works beautifying our Borough while the police keep us safe and secure.

Pine Beach has made it through its first one hundred years. We are now working on our bicentennial and I have to thank everyone for making Pine Beach the "pearl" of the river.

Enjoy the end of summer and the beginning of a successful school year.

Fondly,

Lawrence W. Cuneo





June 21<sup>st</sup>  
Celebration  
*"Century by  
the River"*



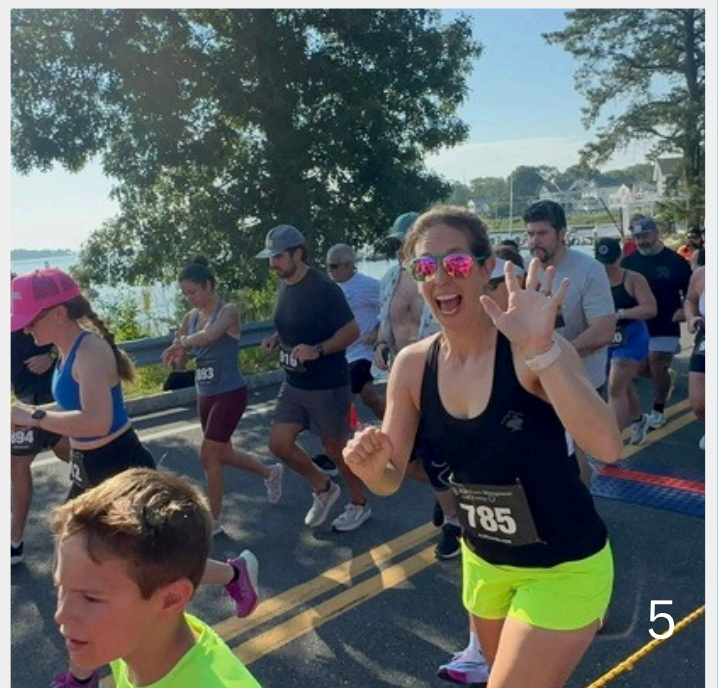


# Ocean Running Club

## Pine Beach 5K









# July 4<sup>th</sup> Parade and Field Games









---

## DEPARTMENT OF PUBLIC WORKS

With the 1<sup>st</sup> Day of Fall approaching quickly, Public Works would like to remind our residents of a few upcoming events.

The Recycling Center will be open Saturday September 13th,  
October 4<sup>th</sup> and 25<sup>th</sup> from 8am-2pm.

### **BULK Pick Up starts on September 15<sup>th</sup>**

- **All Bulk garbage should be placed curbside Sunday the 14<sup>th</sup> . You may not put bulk at the curb prior to the 14<sup>th</sup>.**
- **Limit of 5 items per household.** (These should be items that cannot fit in your garbage can).
- Carpeting and timber must be cut to lengths less than 4 feet long.
- Pieces of loose debris WILL NOT be collected.
- Small items that can be placed in a bag should be bagged and placed in your regular garbage can for regular collection.
- **Electronics and metal objects will not be collected.** They can be brought to the recycling center from 7am – 3pm Monday through Friday and on select Saturdays.

### **BRUSH Collection Begins September 28<sup>th</sup>**

- Please cut brush into lengths no longer than 4 feet.
- Brush must be tied into manageable bundles or placed in cans.
- **DO NOT BAG YOUR BRUSH.**
- Brush that is larger than 4 inches in diameter will not be collected.
- **Ornamental (dune grass), and bamboo will not be collected.** Please bag and place in regular garbage can.





## **Fall Reminders from Your Public Works Department**

As the leaves start to change and the air turns crisp, the Public Works Department is hard at work preparing our community for the fall season.

Here are a few reminders and updates to help you stay safe and informed:

### **Leaf Collection Schedule**

Our annual curbside leaf collection begins November 2nd and runs through December 12. Please place your bagged leaves to the curb—not into the street—to help prevent clogged storm drains and keep our roadways safe. Check the township website or call 732-349-6425 for any additional questions.

### **Seasonal Maintenance**

Crews are busy clearing storm drains, inspecting roadways, and prepping snow removal equipment for the months ahead. Please report any damaged signs, potholes, or drainage issues to our office so we can address them before winter.

### **Storm Preparedness**

With fall storms on the horizon, help us minimize flooding risks by keeping gutters, drains, and sidewalks clear of debris. Your cooperation helps protect homes and infrastructure throughout the community. We appreciate your partnership in keeping our town clean, safe, and beautiful this fall season!

**— Pine Beach Public Works Department**

## ***From the Environmental Commission***

### **For the LOVE of our Trees: some fun facts to consider before cutting your trees downs.**

Oak trees support more forms of life and more fascinating interactions than any other tree genus in North America. In most U.S. counties, oaks, cherries, willows, birches, hickories, pines, and maples are producing the vast numbers and types of insects that support animal populations.

Oaks sustain a crucial and complex web of wildlife above ground but are just as impressive underground, producing enormous root systems that make them champions of carbon sequestration, soil stabilization, and watershed management.

Unfortunately, the diverse web of life that is associated with oaks goes unnoticed and thus unappreciated by most homeowners and even many trained biologists. In fact, too many homeowners cut down oaks on their properties because they have grown tired of raking leaves. The cause of this indifference is lack of knowledge. How can we be interested in or understand the ecological significance of something we know nothing about?

The removal of dead, diseased, and dying limbs are another major consideration. Making regular pruning part of your tree care plan, will help to ensure a long lifespan for your trees. When a tree has problematic branches or limbs, a tremendous amount of energy can be sent toward them to try and make repairs. This can start to affect the health of the rest of the tree. But keeping up with regular pruning can help ensure that those problematic limbs are removed and do not affect the overall health of your tree.

We understand that sometimes a tree needs to come down on someone's property. We all may find ourselves in that position at one point. Providing information will help homeowners make a more informed decision when they decide to take a native tree down.

“The Nature of Oaks” by Doug Tallamy. Doug Tallamy is a professor in the Department of Entomology and Wildlife Ecology and the University of Delaware. He is one of the conservation movement's most respected and important advocates. Here is the link to the book:

<https://www.amazon.com/Nature-Oaks-Ecology-Essential-Native/dp/1643260448>

### **Motor home discharge service**

Did you know that Residents that own motor homes can discharge the contents of the motor home's holding tank at OCUA's Bayville treatment plant FREE of charge as long as they provide proof of residency.

Central Water Pollution Control Facility  
501 Hickory Lane  
Bayville, NJ 08721-2157  
Phone: 732-269-4500

Hours:

Monday – Friday      8:00 am to 3:45 pm

Saturday                8:00 am to 1:45 pm







Jersey-Friendly Yards and native plants are perfect together! Native plants not only add beauty to New Jersey yards; they offer important environmental and economic benefits. Native plants help conserve and filter water, provide habitat for native wildlife, protect soil resources, and reduce the costs and environmental impacts associated with fertilizers and pesticides. They also give us a “sense of place.” From the unique plant communities of the Pinelands to coastal salt marshes to the hardwood forests in the Highlands, New Jersey’s native plants make us feel at home.

JerseyYards.org was developed by the Barnegat Bay Partnership with a grant from the New Jersey Department of Environmental Protection.

<https://www.jerseyyards.org/jersey-friendly-plants/native-plants/>

Where to buy Native Plants locally to Pine Beach:

Cicconi Farms Inc.

1005 Farmingdale Road

Jackson, NJ 08527

Phone: (732) 363-1420

<https://www.cicconifarms.com/index.html>

Hammett’s Landscaping and Garden Center

425 U.S. Highway 9

Forked River, NJ 08731

(609) 971-0453

<https://www.hammettslgc.com>

RareFind Nursery

957 Patterson Road

Jackson, NJ 08527

(732) 833-0613

<https://www.rarefindnursery.com>

Moore’s Farm Market

66 Atlantic City Blvd

Bayville, NJ

(732) 349-2876





# Storm Water Pollution Prevention

Stormwater pollution begins when rain or melting snow washes over streets, parking lots and lawns, picks up contaminants, and flows down storm drains into the Toms River and Barnegat Bay. Everything that we put on the ground or that drips into the storm drains can end up in the river: fertilizer, oil, pesticides, detergents, pet waste, grass clippings. Some of it percolates down into our groundwater as well.



Here are ways to keep our water clean and prevent stormwater pollution, along with information about the Pine Beach Borough rules and regulations for keeping our water and stormwater clean.



## **Scoop It. Bag It. Bin It.**

This prevents bacterial contamination and excess nutrients in pet waste from impacting the river and our water. Cat waste must be thrown out into the garbage, never flushed. ([Pet Waste](#) - Pet owners are required to pick up and properly dispose of pet waste dropped on public or other private property. [Read more about Ordinance 05-09-611](#))

## **Keep wildlife wild! Skip the snacks.**

We love our local wildlife but please do not feed water fowl—ducks, geese, etc.—because bacteria and excess nutrients in wildlife waste are harmful to humans and fish populations. ([Wildlife Feeding](#) - Feeding of wildlife on any public park or waterfront or on any other property owned or operated by the Borough is prohibited.) [Read more about Ordinance 05-10-612](#)



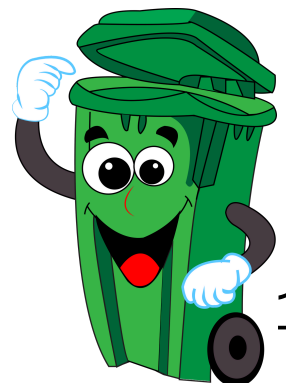
## **If it's not rain, it doesn't drain!**

Prevent leaves and grass clippings from entering the storm sewer system, where the extra nutrients damage water quality in the river, and reduces flooding and backups at storm drains. ([Containerized Yard Waste](#) - Yard Waste is regulated via ordinance that establishes the Borough's current zone collection system and the methods of collecting leaves, brush and other yard waste.) [Read more about Ordinance 05-12-614](#)



## **Trap the Trash, Stop the Splash!**

The spilling, dumping, leaking, draining or other discharge of liquids, semi-liquids or solids from these containers into the storm sewer system is prohibited. Please keep your outdoor garbage cans covered. If you use a dumpster, keep it covered or close the lid after each use. ([Refuse Containers/Dumpsters](#) - All refuse containers and dumpsters that are outdoors or otherwise exposed to stormwater must be covered at all times.) [Read more about Ordinance 10-11-687](#)





### Garbage in all the wrong places!

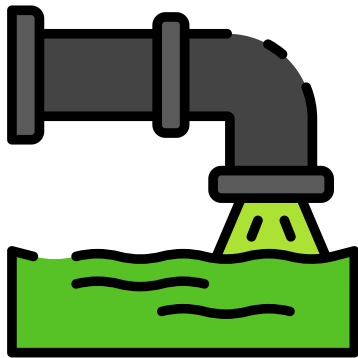
This ordinance prevents unsanitary conditions and groundwater pollution, and the discharge of pollutants into the storm sewer system and receiving waterways. Improper Disposal of Waste - It is illegal to dispose of waste in any place not specifically designated for the purpose of solid waste storage or disposal.) Read more about Ordinance 05-11-613

### Don't be a litter bug! Place lid on trash cans.

Prevent the creation of unsightly and unsanitary conditions, and prevent litter from contributing to bacterial contamination, excess nutrients and chemical pollutants in the waterways. Please dispose of all your litter, including cigarette butts, in the trash. (Litter Control - It is unlawful to throw, drop, discard or otherwise place litter of any nature upon public or private property, other than in a litter receptacle.) Read more about Ordinance 05-08-610



**DO NOT LITTER**  
PLEASE USE A TRASH CAN



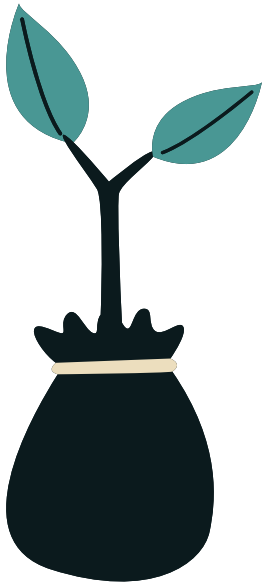
### No "Covert Couplings"

Illicit Connections - *It is unlawful to connect any pipe or device to the municipal storm sewer system, or to spill or dump any material, other than Stormwater runoff or groundwater (via sump pumps) into the storm sewer system.* The purpose of this ordinance is to prevent pollution and contamination of waterways which receive discharge from our storm sewers. Discharge of sewage, wastewater, septic system or other waste discharge into the storm sewer system is prohibited. Read more about Ordinance 05-13-615

### Raindrop Redirection

Private Storm Drain Inlet Retrofitting - All privately owned storm drain inlets in areas of repaving, repair, reconstruction, re-grading, resurfacing or other alterations of facilities on private property must be retrofitted to current standards. This reduces the discharge of solids and floatables (such as plastic bottles, cans, food wrappers and other litter) into the storm sewer system and public waterways. The Borough requires the use of eco-grates on all storm inlets. Read more about Ordinance 10-12-688



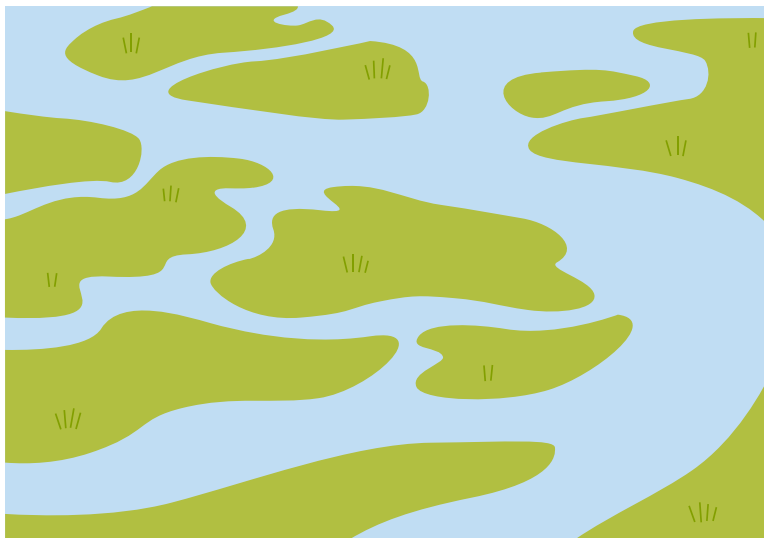


### **Arbor Upgrade**

Tree Removal and Replacement - Because both damage to, and removal of, healthy trees has a negative impact upon the Borough's tree canopy coverage and related environmental impacts upon pollution, soil erosion and flooding, the Tree Ordinance has been amended to limit the removal of otherwise healthy trees in the community. A Tree Removal Permit application is required to be filed with the Borough for all tree removals, including removal of dangerous trees. In some cases, applicants will have to provide for replacement trees in alternate locations or pay a fee to be used towards a Borough tree replacement program. [Read more about Ordinance 2024-06-812](#)

### ***"Shake, Melt, and Store"***

Salt/De-icing Materials Storage - All permanent and temporary de-icing materials must be stored in a manner that prevents the materials from being exposed to stormwater, keeping them completely covered in a pile that sheds water or must be stored indoors. This prevents dissolved pollutants from making their way into waterways and drinking water supplies. [Read more about Ordinance 2024-05-811](#)



Thank you for helping to protect our waterways and keeping Pine Beach clean!



## Fall Water Conservation Tips: Prepare Now, Save Later

As the temperatures drop and leaves begin to fall, it's the perfect time to think about conserving water. Even though demand typically lessens in cooler months, smart fall water habits can lead to big savings and a healthier environment year-round.

Here are a few easy ways to conserve water this season:

- **Adjust Irrigation Systems:** Shorter days and cooler temperatures mean lawns and gardens need less water. Reduce watering frequency or shut off systems entirely as growth slows.
- **Check for Leaks:** Fall is a great time to inspect outdoor faucets, hoses, and irrigation lines for leaks before winter freezing causes damage.
- **Mulch Garden Beds:** A fresh layer of mulch helps soil retain moisture and protects plant roots as temperatures cool.
- **Capture Rainwater:** Use rain barrels to collect water for future use in gardens or landscaping.
- **Install Weather-Based Controllers:** These smart devices adjust watering based on rainfall and temperature, ensuring efficient water use.

Every drop counts—conserving water now helps ensure we have enough for the future. Let's work together to protect this vital resource!

The Borough of Pine Beach Water Dept. is required by the EPA and NJ DEP to adhere to very stringent water quality parameters to ensure residents receive safe drinking water. Testing is provided by an outside agency (Henderson Labs, Beachwood NJ) and results are reported to NJDEP and published on the NJ Drinking Water Watch Web Site. You can use the following link to access [https://www9.state.nj.us/DEP/WaterWatch\\_public/JSP/WSDetail.jsp?tinwsys=474](https://www9.state.nj.us/DEP/WaterWatch_public/JSP/WSDetail.jsp?tinwsys=474)

*"Nothing is softer or more flexible than water, yet nothing can resist it."*

- Lao Tzu

[Click here for the Pine Beach](#)  
[2024 Annual Water Drinking Report](#)

---

## FIRE COMPANY YARD SALE



# Fall Community Yard Sale

**Saturday, September 6  
& Sunday, September 7  
9am-3pm**

**Sponsored by the  
Pine Beach Volunteer Fire Company.**

**This event is rain or shine and non-refundable.**

**Registration forms can be returned to Borough Hall  
Monday-Friday 9am-4pm with \$20 donation to PBVFC.**

**Pick up Yard Sale certificate at  
PBVFC Fire House on September 5 from 4-6pm.**

**TOWN WIDE YARD SALE  
SAT. & SUN. SEPTEMBER 6<sup>TH</sup> & 7<sup>TH</sup>**

**REGISTRATION FORMS AVAILABLE BY CLICKING HERE, OR  
AT BOROUGH HALL, POST OFFICE, 7-11 AND  
ON THE FIRE COMPANY WEBSITE:**

**[WWW.PINEBEACHFIRE.ORG](http://WWW.PINEBEACHFIRE.ORG)**

**DON'T FORGET THE VOL. FIRE COMPANY ANNUAL FUND DRIVE  
PLEASE SEND IN OR VENMO YOUR DONATION TODAY!**

# ***PINE BEACH VOL. FIRE CO.NO. 1***

## ***STATION NO. 38***

*525 Prospect Ave  
Pine Beach, NJ 08741  
(732) 349-5639*

---

### **2025 Community Fall Yard Sale**

**Saturday & Sunday September 6<sup>th</sup> and 7<sup>th</sup> 9AM-3 PM**  
**Sponsored by the Pine Beach Volunteer Fire Company**

**This event is rain or shine and non-refundable**

***\$20.00 Registration fee includes:***  
**\*ADVERTISING\* \*LISTING ON MAP\***  
**\*PERMIT FOR YARD SALE\***

**PICK UP PERMITS ON FRIDAY September 5<sup>th</sup>, 4-6PM**  
**AT THE PINE BEACH VOLUNTEER FIRE COMPANY**

**\*\*Municipal Bulk Pick up is scheduled for September 15<sup>th</sup> and 16<sup>th</sup>\*\***  
**\*\*Items may not be placed at the curb until Sunday, September 14<sup>th</sup>\*\***

**REGISTRATIONS GUARANTEED TO BE ON THE MAP/LIST MUST BE PROCESSED  
BY SEPTEMBER 5<sup>th</sup> 9AM.**

**REGISTRATIONS WILL BE ACCEPTED AT THE FIREHOUSE ON SEPTEMBER 5<sup>TH</sup> 4PM-6PM**

**Thank you to all our residents who continually support the Pine Beach Volunteer Fire Company**

**(DETACH ON THE DOTTED LINE AND MAIL BACK WITH YOUR PAYMENT OF \$20)**

---

### **PBVFC COMMUNITY YARD SALE REGISTRATION FORM**

Name: \_\_\_\_\_

Address: \_\_\_\_\_

Email Address: \_\_\_\_\_

Telephone: \_\_\_\_\_

For additional information email us at [PBVFCyardsale@gmail.com](mailto:PBVFCyardsale@gmail.com) or call 732-349-5639. You can also call the Pine Beach Municipal Building at 732-349-6425 for additional information.

Mail this form with payment to: *Pine Beach Volunteer Fire Company, Community Yard Sale, 525 Prospect Ave, Pine Beach, NJ 08741* or drop off at the Pine Beach Municipal Building.

PAID BY CHECK \_\_\_\_\_ CHECK # \_\_\_\_\_ CASH \_\_\_\_\_ DATE PAID \_\_\_\_\_

*Serving the Community since 1925*



# FIRE COMPANY EVENTS



## *PINE BEACH FIRE COMPANY* **FIRE FEST 2025**



**Celebrating 100 years of service to Pine Beach Borough**

**LIVE BAND—FOOD TRUCKS—VENDORS—BEER GARDEN— FIRE  
DEMONSTRATIONS—CAR SHOW- CHILDREN'S ACTIVITIES**

**October 4, 2025**

**Noon until 7:00 PM**

**Save the Date!!**

**October 4, 2025**

## *FireFest 2025*

**Vista Park on the banks of the Toms River  
Riverside and Midland Aves Pine Beach, NJ**

**Featuring:**

- Food trucks
- vendors and crafters
- Beer and Wine Garden
- Live Music with *"The Drunken Clams"*
- Fire equipment demonstrations
- Children's activities
- **NEW FOR THIS YEAR: Firefest Car Show**

**We are looking for**

- Craft Vendors as well as business, non-profit and health care vendors
- Car show entries
- Event sponsors
- Ad book sponsors

Applications can be found at <https://pinebeachfire.org/fire-fest>

Questions?

[pbvffirefest@gmail.com](mailto:pbvffirefest@gmail.com)





It's almost time for kids to head back to their classrooms and the American Red Cross offers ways to help keep your students safe as they return to school for the upcoming year.

**If your student is younger or going to school for the first time, teach them:**

- Their phone number, address, how to get in touch with their parents at work, how to get in touch with another trusted adult and how to dial 911.
- Not to talk to strangers or accept rides from someone they don't know.

**If your child walks to school, teach them to:**

- Walk on the sidewalk. If no sidewalk is available, walk facing traffic.
- Stop and look left, then right and left again to see if cars are coming.
- Cross the street at the corner, obey traffic signals and stay in the crosswalk.
- Never run out into the street or cross between parked cars.



**If your student takes the bus to school, teach them to:**

- Get to their bus stop early and stand away from the curb while waiting for the bus to arrive.
- Board the bus only after it has come to a complete stop and the driver or attendant has instructed them to get on. And only board their bus, never an alternate one.
- Stay in clear view of the bus driver and never walk behind the bus.



**If your student rides their bike to school, teach them to:**

- Always wear a helmet.
- Ride on the right in the same direction as the traffic is going.

**If you drive your child to school, make sure to:**

- Always use seat belts. Younger children should use car seats or booster seats until the lap-shoulder belt fits properly (typically for children ages 8-12 and over 4'9"), and ride in the back seat until they are at least 13 years old.

**If you have a teenager driving to school, make sure they:**

- Use seat belts.
- Don't use their cell phone to text or make calls and avoid eating or drinking while driving.



**If you are considering getting your student a cell phone:**

- Download the free Red Cross First Aid and Emergency apps to give them access to first aid tips for common emergencies and full weather alerts. Find the apps in smartphone app stores by searching for the American Red Cross or going to [redcross.org/apps](https://www.redcross.org/apps).



## DRIVERS, SLOW DOWN!

**Drivers should slow down as children head back to school.** Know that yellow flashing lights indicate a school bus is getting ready to stop — motorists should slow down and be prepared to stop. Red flashing lights and an extended stop sign indicate the bus is stopped and children are getting on or off.

**Motorists must stop when they are behind a bus, meeting the bus or approaching an intersection where a bus is stopped.** Motorists following or traveling alongside a school bus must also stop until the red lights have stopped flashing, the stop arm is withdrawn, and all children have reached safety. This includes two and four-lane highways. If physical barriers such as grassy medians, guide rails or concrete median barriers separate oncoming traffic from the bus, motorists in the opposing lanes may proceed without stopping. Do not proceed until all the children have reached a place of safety.





**Historical pictures of Pine Beach  
photo capture & story telling event  
Sunday, August 17th and  
Sunday, September 14th  
from 12pm - 3pm**

As part of the Pine Beach Centennial Celebration in 2025, the Pine Beach Preservation Society – Historical Committee is collecting data about “old” Pine Beach families; families with a Pine Beach history prior to 1975. We are focusing on the Time periods of the 1800s, 1900 to 1975. Stories tell the history of Pine Beach! We would love to hear about your Family Stories of your memories of Pine Beach and see any family photographs from Pine Beach or photographs from around town.

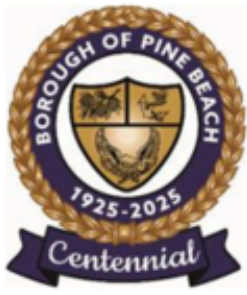
Come to our story telling events and share your historical pictures and the stories behind them. The Historical Committee will scan your pictures and immediately return them to you for safe keeping.

If you are unable to participate at the scheduled events but have information to share, we still want to hear from you. Please contact Justine Saxton ([justinesaxton@yahoo.com](mailto:justinesaxton@yahoo.com)) and provide your contact information and the Historical Committee will reach out to you.

**\*IMPORTANT: By providing your family information, you are granting permission for the details to be published in the Pine Beach Preservation Society 100th Anniversary Publication and retained for historical preservation. \***







JOIN THE  
*Celebration*  
2025  
BOROUGH OF PINE BEACH  
100  
PINE BEACH PRESERVATION SOCIETY  
ADVERTISING/SPONSORSHIP FORM

---

Pine Beach Preservation Society 100th Anniversary Publication Journal Ad submissions. The 100th Anniversary Historical publication is celebrating our towns 100th anniversary by featuring advertisements placed by local businesses and residents, including family advertisements.

The anniversary publication will provide a unique glimpse into our town's history and the lives of its inhabitants. Consider purchasing space in the 100<sup>th</sup> Anniversary Publication and have your message memorialized in Pine Beach History.

Examples of types of advertisements:

**Congratulatory messages:** Families might have placed ads congratulating the town on its milestone and expressing pride in being a part of its history.

**Tributes to ancestors:** Families might have paid tribute to ancestors who played a role in the town's development or were long-time residents.

**Business Advertisements:** Many businesses were (and often still are) family-owned, and their ads could be a testament to a family's enduring presence in the town's commercial life.



Scan QR code to complete ad form online





**Pine Beach Centennial Publication Advertisement**  
**Business Advertisements or Special Family message**  
**Celebrating 100<sup>th</sup> Anniversary of the Borough of Pine Beach**  
**Sponsored by the Pine Beach Preservation Society, Inc.**



<b>Name:</b>	
<b>Address: (Street, City / State, Zip Code)</b>	
<b>Telephone Contact #:</b>	<b>Email:</b>
<b>Family Name:</b>	
<b>Advertisement or Special Family Message to be printed in Publication:</b>	

Business Advertisements / Special Family messages within the book will be black and white unless otherwise noted.

**Select Ad Size:**

Full Page (8.5w x 11h) with/without photo	\$400
Half Page (8.5x x 5.5h) with/without photo	\$200
Quarter Page (4.25w x 5.5h) without photo	\$100
Business Card (3.5w x 2h)	\$50
Line (Single Line)	\$25

**Print Ready Ad Artwork?**

Yes, I will attach artwork now

No, I will send artwork later

N/A, I will not use artwork; I will submit only a logo and/or text

**Mail completed form:**

Pine Beach Preservation Society

c/o Historical Committee – Centennial Publication Advertisement

P.O. Box 101

Pine Beach, NJ 08741

<https://pinebeachpreservationsociety.org/centennial-journal-ad/>



# CHAIR YOGA CLASS WITH BETH

Unwind and Recharge with a Relaxing Yoga Class!

Take a break from the stress and hustle of daily life and join us for a rejuvenating yoga class.

Space is limited to 15 students per class.

Please bring a yoga mat and (2) yoga blocks.  
Chairs will be provided.

## \$50\*

*\*for 6-week session.  
Must be paid in full  
at first class. Cash or  
Venmo accepted.*

PINE BEACH BOROUGH HALL  
599 PENNSYLVANIA AVE. PINE BEACH



BEGINNING 9/4:  
THURSDAYS 6:30-7:15PM



BEGINNING 9/8:  
MONDAYS 2:00-2:45PM

973-769-9989



CALL OR TEXT BETH WITH  
QUESTIONS OR TO REGISTER



**venmo**





Want to be a part of our Halloween Trunk or Treat this year? We are looking for families or businesses to bring their trunk or have a table. You can hand out candy or have a craft for the kids. Scan the QR code to register or visit:

[www.pinebeachborough.us/events](http://www.pinebeachborough.us/events)

The poster features a purple background with a large orange jack-o'-lantern in the center. The text "TRUNK or TREAT" is prominently displayed in orange and green. Various Halloween-themed icons like ghosts, stars, and leaves are scattered around. Four green starburst shapes contain the text "Trunkers Wanted", "Vendors Wanted", and "Free Entry". The event details "October 18, 2025" and "Vista Park from 1-4pm" are listed below the pumpkin, along with a rain date of 10/19. At the bottom, a QR code is provided for registration, with the website [www.pinebeachborough.us/events](http://www.pinebeachborough.us/events) also listed.

 **Trunkers Wanted**

# TRUNK *or* TREAT

**Vendors Wanted**

**Free Entry**

**October 18, 2025**  
**Vista Park from 1-4pm**  
\*Rain date 10/19\*

**TRUNKS, VENDORS, & KIDS ACTIVITIES**



Scan to register or visit:  
[www.pinebeachborough.us/events](http://www.pinebeachborough.us/events)



Kids love the magic of Halloween, but costume and traffic safety are essential for trick-or-treaters. These tips from the National Safety Council can help make a safe and happy holiday for everyone.

### **Costume Safety**

- Be sure to choose a costume that won't cause safety hazards; all costumes, wigs and accessories should be fire-resistant
- If children are allowed out after dark, fasten reflective tape to their costumes and bags, or give them glow sticks
- Opt for nontoxic Halloween makeup over masks, which can obscure vision; always test makeup in a small area first to see if any irritation develops
- Remove all makeup before children go to bed to prevent skin and eye irritation

### **When They're on the Prowl**

Here's a scary statistic: Children are more than twice as likely to be hit by a car and killed on Halloween than on any other day of the year. Lack of visibility because of low lighting at night also plays a factor in these incidents.

Keep these tips in mind when your children are out on Halloween night:

- A responsible adult should accompany young children on the neighborhood rounds
- If your older children are going alone, plan and review a route acceptable to you
- Agree on a specific time children should return home
- Teach your children never to enter a stranger's home or car
- Instruct children to travel only in familiar, well-lit areas and stick with their friends
- Tell your children not to eat any treats until they return home, and take care to avoid any food allergies

### **Safety Tips for Motorists**

NSC offers these additional safety tips for parents – and anyone who plans to be on the road during trick-or-treat hours:

- Watch for children walking on roadways, medians and curbs
- Enter and exit driveways and alleys carefully
- At twilight and later in the evening, watch for children in dark clothing
- Discourage new, inexperienced drivers from driving on Halloween



*Save the date!*

## Important Dates

### NOVEMBER:

**Nov. 4 - Election Day - Polls open 6am-8pm.  
Borough Offices Closed & no trash pickup.**

**Nov. 11 - Borough Offices Closed & no trash pickup**

**Nov. 27 & Nov. 28: Borough Offices Closed for  
Thanksgiving Break**

### DECEMBER:

**Dec. 7 - Annual Tree Lighting at Borough Hall 3:45pm  
(Rain Date 12/14)**

**Dec. 13 - PBVFC Truck Drives Santa around at dusk**

**Dec. 24 - Borough Offices Close at 12pm**

**Dec. 25 - Borough Offices Closed**

**Dec. 31 - Borough Offices Close at 12pm**





PINE BEACH BOROUGH

*Annual*  
**TREE LIGHTING**

DECEMBER

7

AT 3:45 PM

PINE BEACH BOROUGH HALL  
599 PENNSYLVANIA AVE.

HOLIDAY TRAIN ON CANDY CANE LANE

FACE PAINTING  
SWAG MAKING  
WREATH MAKING  
FORK IN THE ROAD FOOD TRUCK -  
PROVIDING HOT CHOCOLATE & SNACKS  
LET'S CELEBRATE!

\*RAINDATE 12/14\*



---

## IMPORTANT REMINDERS



### **PINE BEACH BOROUGH**

**599 PENNSYLVANIA AVENUE  
PO BOX 425, PINE BEACH, NJ 08741  
732-349-6425**

**[WWW.PINEBEACHBOROUGH.US](http://WWW.PINEBEACHBOROUGH.US)**

**BOROUGH HALL HOURS  
MONDAY - FRIDAY 9 AM - 4 PM**

**PINE BEACH MAYOR  
LAWRENCE W. CUNEO**

### **COUNCIL MEMBERS& LIAISONS:**

**JIM KEESLING:** DOCKS & BEACHES

**LORI MCGEE:** CELEBRATIONS &  
ENVIRONMENTAL COMMISSION

**RAY NEWMAN:** CELEBRATIONS; FIRE CO.,  
FIRST AID & EMERGENCY MANAGEMENT

**RICHARD POLHEMUS:** ENVIRONMENTAL &  
NATURAL RESOURCES

**JIM SAXTON:** FINANCE & MUNICIPAL COURT

**BARRY WIECK:** PUBLIC WORKS & PUBLIC  
SAFETY

## Annual Drinking Water Quality Report

### The Pine Beach Water Department

#### Report for the Year 2025, Results from the Year 2024

The following is this year's Annual Drinking Water Quality Report. This report is designed to inform you about the quality water and services we deliver to you every day.

If you are a landlord, you must distribute this Drinking Water Quality Report to every tenant as soon as practicable, but no later than three business days after receipt. Delivery must be done by hand, mail, or email, and by posting the information in a prominent location at the entrance of each rental premises, pursuant to section #3 of NJ P.L. 2021, c.82 (C.58:12A-12.4 et seq.).

**Our water source:** We are committed to ensuring the quality of your water. Our water source is wells. Our two wells draw groundwater from the Kirkwood Aquifer, and are over 170 feet deep. The New Jersey Department of Environmental Protection (NJDEP) has completed and issued the Source Water Assessment Report and Summary for this public water system, which is available by logging onto NJDEP's source water assessment web site at <https://www.nj.gov/dep/watersupply/swap/index.html> or by contacting NJDEP's Bureau of Safe Drinking Water at (609) 292-5550. You may also contact your public water system at 732-349-6425. This water system's susceptibility ratings and a list of potential contaminant sources is attached.

**Vulnerable populations:** Some people may be more vulnerable to contaminants in drinking water than the general population. Immuno-compromised persons such as persons with cancer undergoing chemotherapy, persons who have undergone organ transplants, people with HIV/AIDS or other immune system disorders, some elderly, and infants can be particularly at risk from infections. These people should seek advice about drinking water from their health care providers. EPA/CDC guidelines on appropriate means to lessen the risk of infection by *Cryptosporidium* and other microbiological contaminants are available from the Safe Drinking Water Hotline (800-426-4791).

#### Table of Detections

Contaminant	Violation Y/N	Level Detected	Units of Measure- ment	MC LG	MCL	Likely Source of Contamination
<b>Inorganics:</b>						
Barium Test results Yr. 2024	N	0.08	ppm	2	2	Discharge of drilling wastes; discharge from metal refineries; erosion of natural deposits
Copper Test results from Yr. 2024 Result at 90 <sup>th</sup> Percentile	N	ND No samples exceeded the action level.	ppm	1.3	AL = 1.3	Corrosion of household plumbing systems; erosion of natural deposits
Lead Test results from Yr. 2024 Result at 90 <sup>th</sup> Percentile	N	0.06 No samples exceeded the action level.	ppb	0	AL = 15	Corrosion of household plumbing systems, erosion of natural deposits
Nickel Test results Yr. 2024	N	1.36	ppb	N/A	N/A	Erosion of natural deposits
Nitrate (as Nitrogen) Test results Yr. 2024	N	0.1	ppm	10	10	Runoff from fertilizer use; leaching from septic tanks, sewage; erosion of natural deposits
<b>Radioactives:</b>						
Gross Alpha Test results Yr. 2021	N	3.7	pCi/l	0	15	Erosion of natural deposits
Combined Radium 228 & 226 Test results Yr. 2021	N	3.7	pCi/l	0	5	Erosion of natural deposits
<b>Disinfection Byproducts:</b>						
TTHM Total Trihalomethanes Test results Yr. 2024	N	Range = ND - 1 Highest detect = 1	ppb	N/A	80	By-product of drinking water disinfection
HAA5s Haloacetic Acids Test results Yr. 2024	N	Range = ND - 1 Highest detect = 1	ppb	N/A	60	By-product of drinking water disinfection
<b>Regulated Disinfectants</b>		<b>Level Detected</b>	<b>MRDL</b>		<b>MRDLG</b>	
Chlorine Test results Yr. 2024		Range = 0.5 – 0.8 ppm Average = 0.6 ppm	4.0 ppm		4.0 ppm	

**Chlorine:** Water additive used to control microbes

The Pine Beach Water Department routinely monitors for contaminants in your drinking water according to Federal and State laws. This table shows



the results of our monitoring for the period of January 1<sup>st</sup> to December 31<sup>st</sup>, 2024. The state allows us to monitor for some contaminants less than once per year because the concentrations of these contaminants does not change frequently. Some of our data, though representative, are more than one year old.

**Waivers:** The Safe Drinking Water Act regulations allow monitoring waivers to reduce or eliminate the monitoring requirements for asbestos, volatile organic chemicals and synthetic organic chemicals. Our system received a monitoring waiver for synthetic organic chemicals.

**For additional information:** If you have any questions about this report or concerning your water utility, please contact Michael Sedlak at 732-349-6425. We want our valued customers to be informed about their water utility. If you want to learn more, please attend any of our regularly scheduled Borough Council meetings at Borough Hall, 599 Pennsylvania Avenue. Meetings are held on the second Wednesday of each month at 7:30 p.m.

**Potential sources of contamination:** The sources of drinking water (both tap water and bottled water) include rivers, lakes, streams, ponds, reservoirs, springs, and wells. As water travels over the surface of the land or through the ground, it dissolves naturally occurring minerals and, in some cases, radioactive material, and can pick up substances resulting from the presence of animals or from human activity.

Contaminants that may be present in source water include:

- Microbial contaminants, such as viruses and bacteria, which may come from sewage treatment plants, septic systems, agricultural livestock operations, and wildlife.
- Inorganic contaminants, such as salts and metals, which can be naturally occurring or result from urban storm water runoff, industrial or domestic wastewater discharges, oil and gas production, mining, or farming.
- Pesticides and herbicides, which may come from a variety of sources such as agriculture, urban storm water runoff, and residential uses.
- Organic chemical contaminants, including synthetic and volatile organic chemicals, which are byproducts of industrial processes and petroleum production, and can, also come from gas stations, urban storm water runoff, and septic systems.
- Radioactive Contaminants, which can be naturally occurring or be the result of oil and gas production and mining activities.

In order to ensure that tap water is safe to drink, EPA prescribes regulations which limit the amount of certain contaminants in water provided by public water systems. Food and Drug Administration regulations establish limits for contaminants in bottled water, which must provide the same protection for public health.

Drinking water, including bottled water, may reasonably be expected to contain at least small amounts of some contaminants. The presence of contaminants does not necessarily indicate that the water poses a health risk. More information about contaminants and potential health effects can be obtained by calling the Environmental Protection Agency's Safe Drinking Water Hotline at 1-800-426-4791.

#### **Definitions:**

In the "Table of Detections" you may find some terms and abbreviations you might not be familiar with. To help you better understand these terms we've provided the following definitions:

**Non-Detects (ND)** - laboratory analysis indicates that the constituent is not present.

**Parts per million (ppm)** - one part per million corresponds to one minute in two years or a single penny in \$10,000.

**Parts per billion (ppb)** - one part per billion corresponds to one minute in 2,000 years, or a single penny in \$10,000,000.

**Picocuries per liter (pCi/L)** - picocuries per liter is a measure of the radioactivity in water.

**Action Level** - the concentration of a contaminant which, if exceeded, triggers treatment or other requirements which a water system must follow.

**Maximum Contaminant Level** - The "Maximum Allowed" (MCL) is the highest level of a contaminant that is allowed in drinking water. MCLs are set as close to the MCLGs as feasible using the best available treatment technology.

**Maximum Contaminant Level Goal** - The "Goal" (MCLG) is the level of a contaminant in drinking water below which there is no known or expected risk to health. MCLGs allow for a margin of safety.

**Maximum Residual Disinfectant Level (MRDL)** - The highest level of a disinfectant allowed in drinking water. There is convincing evidence that addition of a disinfectant is necessary for control of microbial contaminants.

**Maximum Residual Disinfectant Level Goal (MRDLG)** - The level of a drinking water disinfectant, below which there is no known or expected risk to health. MRDLGs do not reflect the benefits of the use of disinfectants to control microbial contamination.

#### **Sources of Lead in Drinking Water**

The Pine Beach Water Department is responsible for providing high quality drinking water but cannot control the variety of materials used in plumbing components. Although most lead exposure occurs from inhaling dust or from contaminated soil, or when children eat paint chips, the U.S.

Environmental Protection Agency (USEPA) estimates that 10 to 20 percent of human exposure to lead may come from lead in drinking water. Infants who consume mostly mixed formula can receive 40 percent to 60 percent of their exposure to lead from drinking water. Lead is rarely found in the source of your drinking water but enters tap water through corrosion, or wearing away, of materials containing lead in the water distribution system and household plumbing materials. These materials include lead-based solder used to join copper pipes, brass, and chrome-brass faucets, and in some cases, service lines made of or lined with lead. New brass faucets, fittings, and valves, including those advertised as "lead-free", may still contain a small percentage of lead, and contribute lead to drinking water. The law currently allows end-use brass fixtures, such as faucets, with up to 0.25 percent lead to be labeled as "lead free". However, prior to January 4, 2014, "lead free" allowed up to 8 percent lead content of the wetted surfaces of plumbing products including those labeled National Sanitation Foundation (NSF) certified. Visit the NSF website at [www.nsf.org](http://www.nsf.org) to learn more about lead-containing plumbing fixtures. Consumers should be aware of this when choosing fixtures and take appropriate precautions. When water stands in lead service lines, lead pipes, or plumbing systems containing lead for several hours or more, the lead may dissolve into your drinking water. This means the first water drawn from the tap in the morning, or later in the afternoon if the water has not been used all day, can contain fairly high levels of lead.

#### **Steps You Can Take to Reduce Exposure to Lead in Drinking Water**



For a full list of steps visit: <https://www.state.nj.us/dep/watersupply/dwc-lead-consumer.html>

**Run the cold water to flush out lead.** Let the water run from the tap before using it for drinking or cooking any time the water in the faucet has gone unused for more than six hours. The longer the water resides in plumbing the more lead it may contain. Flushing the tap means running the cold-water faucet. Let the water run from the cold-water tap based on the length of the lead service line and the plumbing configuration in your home. In other words, the larger the home or building and the greater the distance to the water main (in the street), the more water it will take to flush properly. Although toilet flushing or showering flushes water through a portion of the plumbing system, you still need to flush the water in each faucet before using it for drinking or cooking. Flushing tap water is a simple and inexpensive measure you can take to protect your health. It usually uses less than one gallon of water.

**Use cold, flushed water for cooking and preparing baby formula.** Because lead from lead-containing plumbing materials and pipes can dissolve into hot water more easily than cold water, never drink, cook, or prepare beverages including baby formula using hot water from the tap. If you have not had your water sampled or if you know, it is recommended that bottled or filtered water be used for drinking and preparing baby formula. If you need hot water, draw water from the cold tap and then heat it.

**Do not boil water to remove lead.** Boiling water will not reduce lead; however, it is still safe to wash dishes and do laundry. Lead will not soak into dishware or most clothes.

**Use alternative sources or treatment of water.** You may want to consider purchasing bottled water or a water filter. Read the package to be sure the filter is approved to reduce lead or contact NSF International at 800-NSF-8010 or [www.nsf.org](http://www.nsf.org) for information on performance standards for water filters.

**Determine if you have interior lead plumbing or solder.** If your home/building was constructed prior to 1987, it is important to determine if interior lead solder or lead pipes are present. You can check yourself, hire a licensed plumber, or check with your landlord.

**Replace plumbing fixtures and service lines containing lead.** Replace brass faucets, fittings, and valves that do not meet the current definition of "lead free" from 2014 (as explained above). Visit the NSF website at [www.nsf.org](http://www.nsf.org) to learn more about lead-containing plumbing fixtures.

**Remove and clean aerators/screens on plumbing fixtures.** Over time, particles and sediment can collect in the aerator screen. Regularly remove and clean aerators screens located at the tip of faucets and remove any particles.

**Test your water for lead.** Please call Michael Sedlak at 732-349-6425 to find out how to get your water tested for lead. Testing is essential because you cannot see, taste, or smell lead in drinking water.

**Get your child tested.** Contact your local health department or healthcare provider to find out how you can get your child tested for lead if you are concerned about lead exposure. New Jersey law requires that children be tested for lead in their blood at both 1 and 2 years of age and before they are 6 years old if they have never been tested before or if they have been exposed to a known source of lead.

**Have an electrician check your wiring.** If grounding wires from the electrical system are attached to your pipes, corrosion may be greater. Check with a licensed electrician or your local electrical code to determine if your wiring can be grounded elsewhere. DO NOT attempt to change the wiring yourself because improper grounding can cause electrical shock and fire hazards.

**Water softeners and reverse osmosis units** will remove lead from water but can also make the water more corrosive to lead solder and plumbing by removing certain minerals; therefore, the installation of these treatment units at the point of entry into homes with lead plumbing should only be done under supervision of a qualified water treatment professional.

### **Health Effects of Lead**

Lead can cause serious health problems if too much enters your body from drinking water or other sources. It can cause damage to the brain and kidneys and can interfere with the production of red blood cells that carry oxygen to all parts of your body. The greatest risk of lead exposure is to infants, young children, and pregnant women. Scientists have linked the effects of lead on the brain with lowered IQ in children. Adults with kidney problems and high blood pressure can be affected by low levels of lead more than healthy adults. Lead is stored in the bones, and it can be released later in life. During pregnancy, the child receives lead from the mother's bones, which may affect brain development. Contact your local health department or healthcare provider to find out how you can get your child tested for lead if you are concerned about lead exposure. You can find out more about how to get your child tested and how to pay for it at <https://www.state.nj.us/health/childhoodlead/testing.shtml>.



## **Pine Beach Water Department - PWSID # NJ1522001**

Pine Beach Water Department is a public community water system consisting of 2 wells.

This system's source water comes from the following aquifer: Kirkwood-Cohansey Watertable Aquifer System

This system can purchase water from the following water systems: Berkeley Water Department, Beachwood Water Department.

### **Susceptibility Ratings for Pine Beach Water Department Sources**

The table below illustrates the susceptibility ratings for the seven contaminant categories (and radon) for each source in the system. The table provides the number of wells and intakes that rated high (H), medium (M), or low (L) for each contaminant category. For susceptibility ratings of purchased water, refer to the specific water system's source water assessment report.

The seven contaminant categories are defined at the bottom of this page. DEP considered all surface water highly susceptible to pathogens, therefore all intakes received a high rating for the pathogen category. For the purpose of Source Water Assessment Program, radionuclides are more of a concern for ground water than surface water. As a result, surface water intakes' susceptibility to radionuclides was not determined and they all received a low rating.

**If a system is rated highly susceptible for a contaminant category, it does not mean a customer is or will be consuming contaminated drinking water.** The rating reflects the potential for contamination of source water, not the existence of contamination. Public water systems are required to monitor for regulated contaminants and to install treatment if any contaminants are detected at frequencies and concentrations above allowable levels. As a result of the assessments, DEP may customize (change existing) monitoring schedules based on the susceptibility ratings.

	Pathogens			Nutrients			Pesticides			Volatile Organic Compounds			Inorganics			Radionuclides			Radon			Disinfection Byproduct Precursors		
Sources	H	M	L	H	M	L	H	M	L	H	M	L	H	M	L	H	M	L	H	M	L	H	M	L
Wells - 2			2	1	1				2	2			2			1	1			1	1		2	

**Pathogens:** Disease-causing organisms such as bacteria and viruses. Common sources are animal and human fecal wastes.

**Nutrients:** Compounds, minerals and elements that aid growth, that are both naturally occurring and man-made. Examples include nitrogen and phosphorus.

**Volatile Organic Compounds:** Man-made chemicals used as solvents, degreasers, and gasoline components. Examples include benzene, methyl tertiary butyl ether (MTBE), and vinyl chloride.

**Pesticides:** Man-made chemicals used to control pests, weeds and fungus. Common sources include land application and manufacturing centers of pesticides. Examples include herbicides such as atrazine, and insecticides such as chlordane.

**Inorganics:** Mineral-based compounds that are both naturally occurring and man-made. Examples include arsenic, asbestos, copper, lead, and nitrate.

**Radionuclides:** Radioactive substances that are both naturally occurring and man-made. Examples include radium and uranium.

**Radon:** Colorless, odorless, cancer-causing gas that occurs naturally in the environment. For more information go to <http://www.nj.gov/dep/rpp/radon/index.htm> or call (800) 648-0394.

**Disinfection Byproduct Precursors:** A common source is naturally occurring organic matter in surface water. Disinfection byproducts are formed when the disinfectants (usually chlorine) used to kill pathogens react with dissolved organic material (for example leaves) present in surface water.

In July 2021, P.L.2021, Ch.183 (Law) was enacted, requiring all community water systems to replace lead service lines in their service area within 10 years. Under the law, The Pine Beach Water Department is required to notify customers, non-paying consumers, and any off-site owner of a property (e.g., landlord) when it is known they are served by a lead service line\*. Our service line inventory is available upon request.

We at the Pine Beach Water Department work hard to provide top quality water to every tap. We ask that all our customers help us protect our water sources, which are the heart of our community, our way of life and our children's future. Please call our office if you have questions.